

FOR LEASE 1045 Memorex Drive

+/- 7,200 SQ FT | Santa Clara, CA



CONTACT

Nigel Endersby

650-465-3726

CA-DRE # 00843736

Nigel.Endersby@StetsonEarhart.com

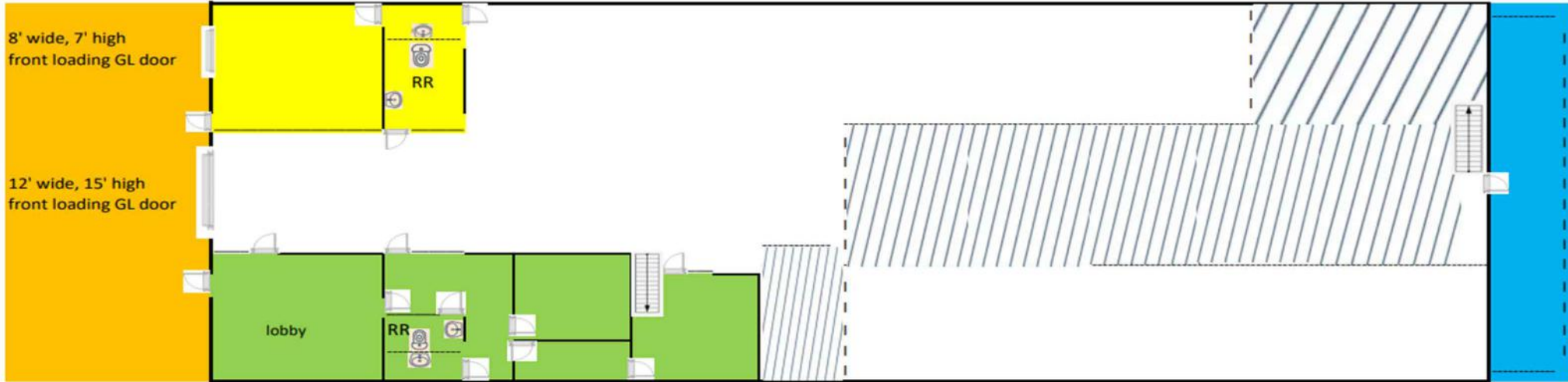
PROPERTY HIGHLIGHTS







- INDUSTRIAL BUILDING IN SANTA CLARA
- +/- 7,200 SF BUILDING + BONUS MEZZANINE SPACE
- 11 PARKING STALLS ON SITE
- +/- 17 - 20 FT CLEAR HEIGHT
- 25% OFFICE 75% WAREHOUSE WITH ROLL-UP DOOR
- NEWLY PAINTED INTERIOR / EXTERIOR / EPOXY FLOOR
- HEAVY POWER - 700 AMPS 110/208 VOLT & 277/480 VOLT
- CLOSE TO HWY 101

STETSON EARHART, 530 LYTTON AVE, 2ND FLOOR, PALO ALTO, CA 94301

ALL RIGHTS RESERVED. THE INFORMATION CONTAINED IN THIS COMMUNICATION IS STRICTLY CONFIDENTIAL. THIS INFORMATION HAS BEEN OBTAINED FROM SOURCES BELIEVED TO BE RELIABLE BUT HAS NOT BEEN VERIFIED. NO WARRANTY OR REPRESENTATION, STETSON EARHART 530 LYTTON AVE, 2ND FLOOR, PALO ALTO, CA 94301 CHANGE OF PRICE, RENTAL OR OTHER CONDITIONS, WITHDRAWAL WITHOUT NOTICE, AND TO ANY SPECIAL LISTING CONDITIONS IMPOSED BY THE PROPERTY OWNER(S). ANY PROJECTIONS, OPINIONS OR ESTIMATES ARE SUBJECT TO UNCERTAINTY AND DO NOT EXPRESS OR IMPLIED, IS MADE AS TO THE CONDITION OF THE PROPERTY (OR PROPERTIES) REFERENCED HEREIN OR AS TO THE ACCURACY OR COMPLETENESS OF THE INFORMATION CONTAINED HEREIN, AND SAME IS SUBMITTED SUBJECT TO ERRORS, OMISSIONS, SIGNIFY CURRENT OR FUTURE PROPERTY PERFORMANCE.

Interior Photos & Floor Plan



	office with mezzanine above
	dropped ceiling lab
	mezzanine
	fenced yard
	concrete floor - high ceiling warehouse
	outdoor parking - 11 stalls
drawing not to scale	