

**FOR
SUBLEASE**

321 CASTRO STREET

MOUNTAIN VIEW, CA | +/- 1,478 – 10,000 SQFT | DOWNTOWN OFFICE



CHAD MARTIN
Senior Director
650.815.9851

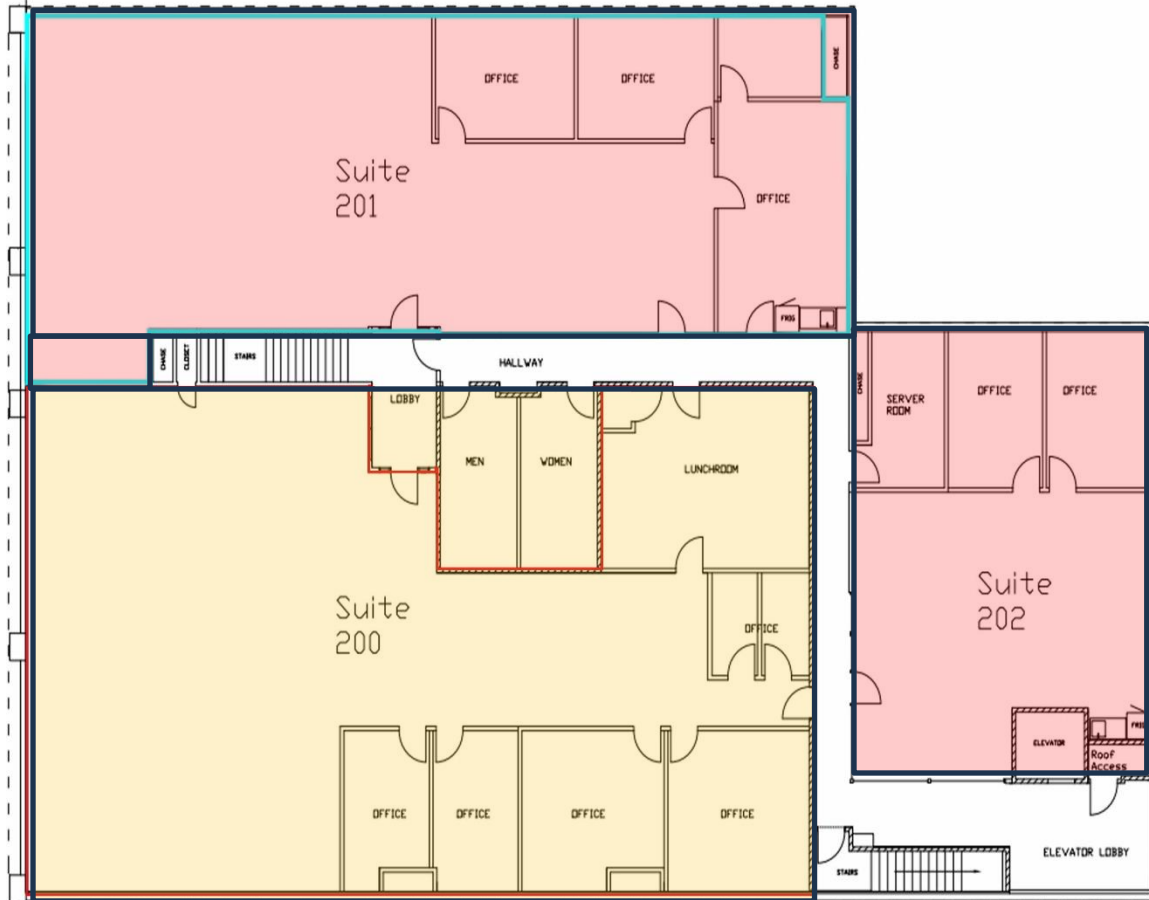
Chad.Martin@StetsonEarhart.com
CA – DRE Lic # 02106951

+/- 4,900 SF OFFICE

- PRIME CASTRO STREET DOWNTOWN LOCATION**
- PUBLIC PARKING IN REAR OF BUILDING**
- ELEVATOR SERVED | OPERABLE WINDOWS | NATURAL LIGHT**
- WALKING DISTANCE TO CALTRAIN**
- NEW LOBBY, RESTROOM AND BREAKROOM**



Building Floor Plan (Suite 200|201|202)



- **Suite 200 : +/- 4,900 SF (Available Now)**
- Large Private Breakroom
- 5 Private Offices and 2 Phone Rooms
- Operable Windows and Open Plan

- **Suite 201 : +/- 3,622 SF (Available Oct 1)**
- Private Breakroom
- Two Private Offices
- Operable Windows
- **Suite 202 : +/- 1,478 SF (Available Oct 1)**
- Two Private Offices
- Kitchenette
- Open Floor Plan and Natural Light

+/- 10,000 SF Contiguous Space Available

- Elevator Served
- Front and Rear Entrance
- Fiber Internet Available (to be confirmed)
- Updated Interior Amenities
- Glass Lobby and New Flooring



EXCLUSIVELY LISTED BY

CHAD MARTIN

Senior Director

650.815.9851

Chad.Martin@StetsonEarhart.com

CA – DRE Lic # 02106951